

2016 Educational Conference

Mission Statement:
The Down Syndrome Association for Families is a Lincoln based non-profit organization that provides support for individuals with Down Syndrome, their families, friends, educators and professionals who share in their lives.

Down Syndrome Association for Families of Nebraska 2016 Educational Conference

Join us on November 5, 2016

8 am—4 pm

Country Inn & Suites

5353 N. 27th Street

Lincoln, NE



*Helping children with special needs
reach their full potential.*



8:00 am - 8:30 am	Registration with Continental Breakfast			
8:30 am - 9:30 am	<p>AMELIS LONG, First National Bank of Omaha - enABLE Savings Plan basics, including eligibility, account ownership, impact to resource-based benefits and Enable accounts details.</p> <p>Opening Keynote: KATHLEEN WHITBREAD, PhD - Reading and Children with Down Syndrome</p>			
	ROOM ASSIGNMENTS TBD			
9:45 am - 11:15 am	<p>DR. KATHLEEN WHITBREAD</p> <p>LITERACY DEVELOPMENT FOR EDUCATORS covering all ages</p>	<p>DENISE GEHRINGER Ollie Web Center, Inc.</p> <p>TRANSITIONS Making the Move; moving from Grade school to Jr. High/Middle School and Jr. High to HS</p>	<p>MATT MCNIFF ESU#5 Behavioral Consultant</p> <p>BEHAVIOR STRATEGIES for children w/Down syndrome elementary age</p>	<p>HEIDI SOMMER PTI Nebraska</p> <p>EDN and IFSP Services Birth12 to 5 years</p>
11:30 am - 12:30 pm	<p>LUNCH PROVIDED</p> <p>Conversational Session with MARDRA SIKORA, Advocate/Author/Speaker & MARCUS SIKORA, Self-Advocate/Author</p>			
12:45 pm - 2:15 pm	<p>DR. KATHLEEN WHITBREAD</p> <p>LITERACY DEVELOPMENT of older children and young adults</p>	<p>NICOLE MEYER Wonderfully Made</p> <p>Recreational Therapy: a much needed resource!</p>	<p>MATT MCNIFF ESU#5 Behavioral Consultant</p> <p>BEHAVIOR STRATEGIES more solutions for improving behavior</p>	<p>CARRIE KENNY RiteCare</p> <p>Intro to Augmentative and Alternative Communication & Preschool Model Provided at Scottish Rite RiteCare Clinic</p>
2:15 pm - 2:30 pm	AFTERNOON BREAK			
2:30 pm 4:00 pm	<p>DR. KATHLEEN WHITBREAD</p> <p>LITERACY DEVELOPMENT of young children Pre-school to grade 4</p>	<p>DENISE GEHRINGER Ollie Web Center, Inc.</p> <p>TRANSITIONS Smooth and Steady Transitions to Adult Services (post 21, after the exit from the school system)</p>	<p>MATT MCNIFF ESU#5 Behavioral Consultant</p> <p>BEHAVIOR STRATEGIES for children w/Down syndrome ms/hs age</p>	<p>JENNIFER MILLER PTI Nebraska</p> <p>IEPs School-Age and Up</p>

\$50 per person (\$10 discount for DSAF members)

\$75 per couple (\$10 discount for DSAF members)

\$40 teacher/student

Register at: dsafnebraska.org

DSAF
PO Box 57362
Lincoln, NE 68505

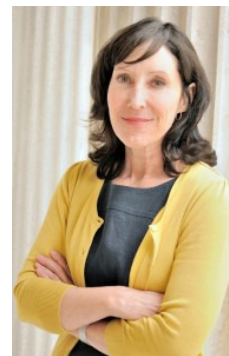
www.dsafnebraska.org

402-421-1338

Opening Sessions:

What We Know About Teaching Reading to Children with Down Syndrome - Kathleen Whitbread, Ph.D.

This presentation will focus on current research and best practices for teaching reading to children with Down syndrome. The results of a national survey on the literacy experiences of children with Down syndrome will also be shared, highlighting home- and school-based practices that contribute to a strong literacy foundation.



enABLE Savings Plan

Amelis Long, First National Bank of Omaha

Able Basics, including eligibility, account ownership, impact to resource-based benefits and Enable accounts details. This is an interactive session, where folks are welcome to ask questions, share scenarios and discuss action steps so they can walk away informed about the options they have in asset development.



Lunch Session:

MARDRA & MARCUS SIKORA

Conversational session with Mardra and Marcus Sikora. Mardra Sikora is an author, speaker, & advocate who believes in the power of words and uses both fiction and non-fiction to advocate for and with her adult son, Marcus. Author of "[Essay: Arguing Eugenics](#)," and [The Future and Other Twists: A collection of short and super-short stories](#). Co-Author of [The Parent's Guide to Down Syndrome: Advice, Information, Inspiration, and Support for Raising Your Child from Diagnosis through Adulthood](#). Her work is also included in a variety of anthologies and national websites including [The Huffington Post](#).



Conference handouts will be available for download at:

<http://www.dsafnebraska.org>



Early Literacy Instruction for Children with Down Syndrome

Kathleen Whitbread, Ph.D.

This presentation will explore current research, best practices, and practical strategies for teaching reading to children with Down syndrome, focusing on the early literacy development of children from Pre-K through elementary school.

Target audience: Parents of children in Pre-k through 5th grade.

Literacy Instruction for Older Children and Young Adults

Kathleen Whitbread, Ph.D.

This presentation will explore current research, best practices, and practical strategies for improving the literacy outcomes of children with Down syndrome in middle and high school.

Participants will learn about the essential components of literacy instruction, including special considerations and strategies for older readers.

Target audience: Parents of children in middle through young adults.

Implementing Research-based Reading Instruction

Kathleen Whitbread, Ph.D.

This presentation will focus on research-based practices for teaching reading to children with Down syndrome, including instructional methods, materials, pacing and progress monitoring.

Participants will have an opportunity to try out methods and strategies through small group activities.

Target audience: Educators, all grade levels.

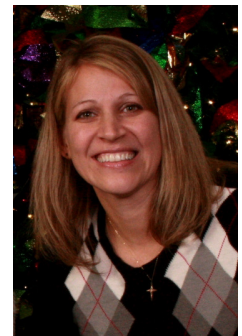


Understanding the IEP

Jennifer Miller, M.A.

When it comes to the special education process, it's important to be knowledgeable about all aspects of the Individualized Education program (IEP), including the different services, supports, and strategies that should be considered and included in a child's plan based on his or her unique academic and functional needs.

The information in this training will help parents better prepare for meetings and effectively advocate for their child. Topics such as evaluations, accommodations, progress monitoring, assistive technology, behavior plans, and social skills instruction will be discussed. Handouts and resources will be provided.



An Overview of Early Childhood Services (EDN and IFSP),

Heidi Sommer, B.A.

It is important to know how to promote your child's development at a very early age, even at birth. Parents might ask, how do they do that or what services are available? Participants will learn about the Early Development Network in Nebraska, including the history, philosophy, values, family-centered services and the principles of family involvement. Early intervention seems to be a buzz word for children with developmental concerns. This session will continue with information about how the IFSP works for families who have infants and toddlers with special needs. Participants will learn how their family routines fit into the development of the IFSP and become a part of the goals for their child's plan to learn and grow. A short overview of how a child transitions from an IFSP to IEP at age three will also be provided.



Making the Move: Transitions to a New School

Denise Gehringer

Information and tips for a seamless and manageable move to Junior High & High School



Smooth and Steady Transitions

Denise Gehringer

Timeline, checklist and tips to manage transition to adult services (This information is useful for families and caregivers of an individual with disabilities age 14 and up)

Behavior Strategies: It Should be Easier Than This: More Solutions for Improving Behavior

Dr. Matt McNiff

This session has a great deal of additional strategies and tools for your behavior toolbox. Strategies discussed in this session will include staying out of arguments and power struggles, using the defiance that is shown to your advantage, how to dislodge children who have dug in their heels and ways to reinforce children when they decide to change their behavior."

Behavior Strategies

Dr. Matt McNiff

Raising children is a difficult task. Combine the normal rigors of raising a child with a disability and behavior issues and it can almost be too much. But with a few changes in the way that you view your child's behavior and some consistency and time, these behaviors can become a thing of the past. In this session, parents will gain a better understanding of the reasons why children misbehave, behavior management tools that can be used right away and changes in thinking patterns that can take behavior from a frustrating situation to one that has positive outcomes at the end. This session will be filled with lots of examples, stories and humor to show how behavior change can be a skill that anyone can help with.



Recreational Therapy

Nicole Meyer, CTRS

Recreational Therapy: a much needed resource! Find out what Rec Therapy is? How does this service benefit kids with special needs? What is so unique about this? Hear first hand examples and learn more about Recreational Therapy outcomes



Augmentative and Alternative Communication

Carrie Kenny, M.S., CCC-SLP

Today's presentation will focus on an introduction to Augmentative and Alternative Communication (AAC) use for children with communication delays and disorders. It will discuss AAC research and misconceptions, including research specifically supporting AAC use for children with Down Syndrome. This presentation will also discuss various modalities of AAC, how to implement AAC into everyday routines, and ways AAC may enhance your child's communication skills. In addition, Carrie will discuss the preschool model provided at the Scottish Rite RiteCare Clinic of Lincoln and the associated parent training program.